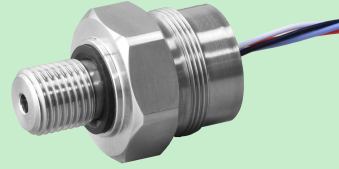


SS121V27 series piezoresistive standard pressure transducers

Features

- Customized size
- High accuracy, high reliability
- Stainless steel 316L diaphragm
- 1.0mA, 1.5mA constant current supply
- 5VDC, 10VDC constant voltage supply
- 0-70°C temperature compensation range
- Isolated construction, able to test various media
- Absolute, gauge and sealed gauge pressure is optional



O-ring sealing inside
Maximum pressure up to 600bar

Descriptions

SS121V27 series piezoresistive standard pressure transducers are designed with Sendo diameter Ø19mm sensor, the sensor floats on an O-ring seal and is therefore free of any housing stresses, maximum pressure range up to 60MPa. The size of housing, and the pressure/screw connection can be designed according to the request.

The SS121V27 series offer an option of integrate the MCP9700 temperature sensor, so the sensor can give both pressure and temperature signal with a great working performance, two types of electrical connections pins or wires is optional, are the ideal basis for pressure transmitters, pressure switches or digital pressure instruments.

Parameters

Power supply	1.5mADC	5VDC(optional)	10VDC(optional)
Zero output	0±2mV①		
Span output	100±20mV①		
Accuracy	0.25%F.S.①		
Measuring range	0...0.1bar to 600bar(positive pressure) -1...0bar, -0.1...0bar(negative pressure) -1...3bar, -1...15bar(compound pressure)		
Overload range	2.0 × F.S.(<25MPa)		
	1.5 × F.S.(≥25MPa)		
Compensated temp range	0°C → 70°C		
Operating temp range	-20°C → 100°C		
Storage temp range	-40°C → 125°C		
Zero thermal error	≤0.02% F.S./°C		
Stability	≤0.2% F.S./Year		
Input impedance	2.3KΩ → 4KΩ		
Insulation resistance	>100 MΩ at 250 V		

①: The zero output, span output and accuracy may different if the supply power, measuring range and pressure type is different, please contact us if you need more details.

SS121V27 series piezoresistive standard pressure transducers

Mechanical characteristics

Materials	Diaphragm	Stainless steel 316L(typical)	More options see Page 3
	Housing	Stainless steel 304(typical)	Stainless steel 316L(optional)
	Pressure connection	Stainless steel 304(typical)	More options see Page 3
	Filling liquid	Silicone oil	
	Sealing inside	O-ring Viton	
Pressure connection	See Ordering information in page 3		
Electrical connection	See Ordering information in page 3		
Weight	100-200g(depending on pressure connection and electrical connection)		

Electrical connections

wires		Pins connection mode 1		Pins connection mode 2	
Color	Function		PIN1: Supply +		PIN1: Supply +
Red	Supply +		PIN2: Output -		PIN2: Output +
Black	Supply -		PIN3: Supply -		PIN3: Supply -
White	Output +		PIN4: Supply -		PIN4: Supply -
Blue	Output -		PIN5: Output +		PIN5: Output -

Drawings

G1/2" thread	G1/4" thread	G1/8" thread
1/2"NPT thread	1/4"NPT thread	1/8"NPT thread

SS121V27 series piezoresistive standard pressure transducers

Ordering information

EXAMPLE: **SS121V27 PJ 01 B 01 A**

1	Pressure range(bar)	PJ
	NA(-1...0) NB(-0.7...0) NC(-0.35...0) ND(-0.2...0) NE(-0.1...0) PA(0.1) PB(0.2) PC(0.35) PD(0.7) PE(1.0) PF(1.6) PG(2.5) PH(4.0) PI(6.0) PJ(10) PK(16) PL(25) PM(40) PN(60) PO(100) PP(160) PQ(200) PR(250) PS(400) PT(600) CA(-1...0.6) CB(-1...1.5) CC(-1...3) CD(-1...5) CE(-1...9) CF(-1...15) CG(-1...24) X(Other pressure range or unit is on request)	
2	Pressure type	01
	01(Vented gauge) 02(Absolute) 03(Sealed gauge)	
3	Electrical connection②	A
	A(4Wires) B(5Wires) C(4Pins mode 1) D(4Pins mode 2) E(5Pins mode 1) F(5Pins mode 2)	
4	Power supply	01
	01(1.5mADC) 02(5VDC) 03(10VDC) 04(Other supply is on request)	
5	Pressure connection	A
	A(1/4"NPT) B(1/2"NPT) C(1/8"NPT) D(G1/4") E(G1/2") F(G1/8") G(PT1/4") H(PT1/2") I(PT1/8") J(Other pressure connection is on request)	

②: 4Wires and 4Pins connection: the zero signal is set by SENDO SENSOR before leave factory.

②: 5Wires and 5Pins connection: the zero signal can be set by clients.

②: Pins Mode1 and Mode2: please see the details in the Electrical connection in page 2.

Optional(please contact us for more details)

1	Integrate the MCP9700 temp sensor
	A(YES) B(NO)
2	Material of diaphragm
	01(Titanium) 02(Tantalum) 03(Hastelloy-C)
3	Material of pressure connection
	A(Titanium) B(Tantalum) C(Hastelloy-C) D(Stainless steel 316L)

Contact us

Company	Ningbo Sendo Electronic Technology CO., LTD	
Email	sales@sendo-sensor.com	
Email	cain.chen@sendo-sensor.com	
Factory	Floor 5, building 2, no.48 jiujuan road, jianggan district, 310019 China	
Office	Building. 1#1108, Wante business center, Hi-Tech, 315040 China	
Website	http://www.pressuresensorsuppliers.com	http://www.sendo-sensor.com
Skype: sendosensor	We Chat: chenjie4884	WhatsApp: +8613616574884
Tel: 0086-0574-27725960	Fax: 0086-0574-27725970	Phone: 0086-13616574884

*Specifications subject to change without notice, the latest date sheet please contact: sales@sendo-sensor.com